

# 17M LONG REACH BOOM AND ARM

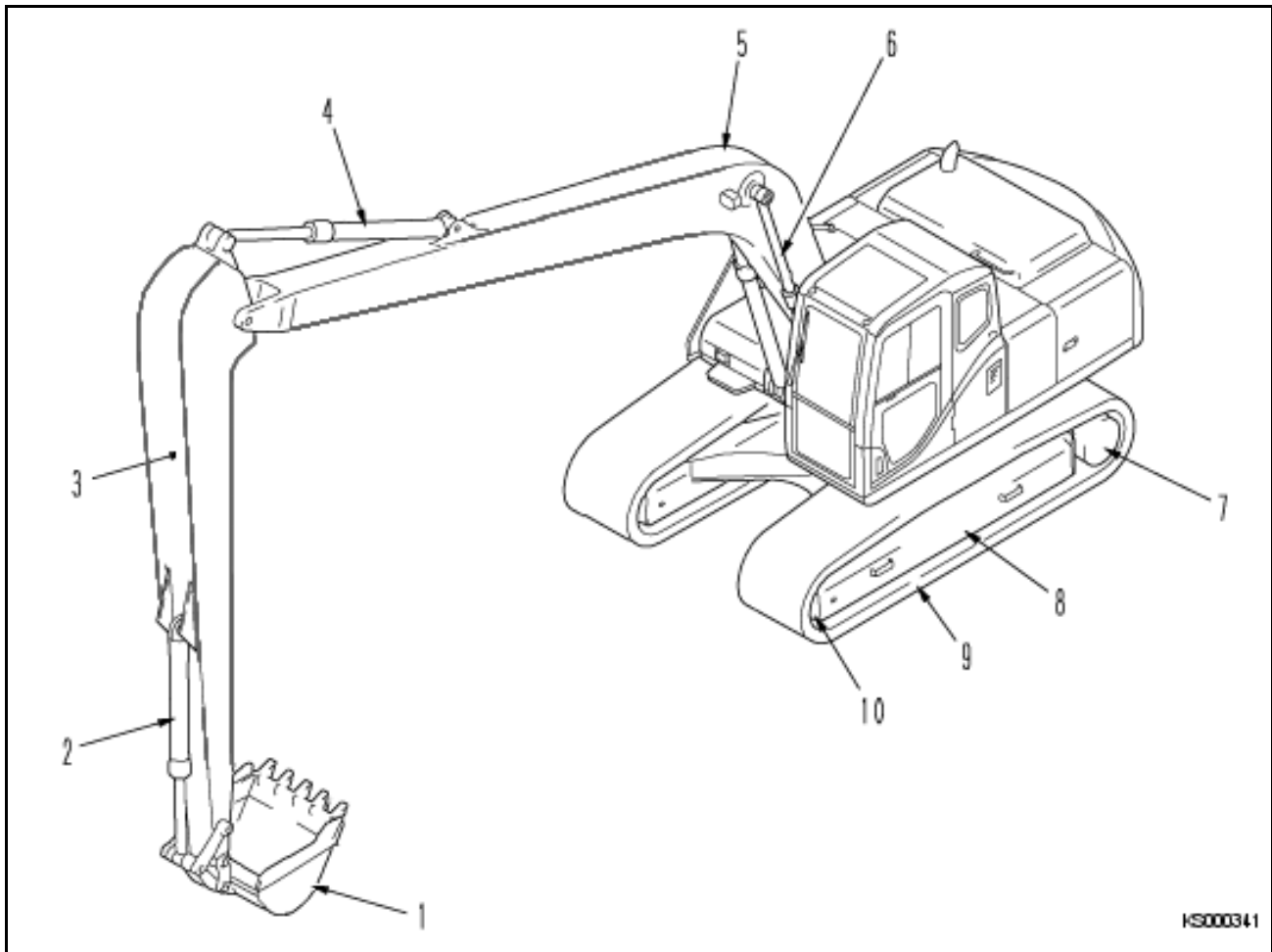
 **WARNING**

Please read and make sure that you understand the SAFETY section before reading this section.

---

This section describes only the 17m Long Reach Boom and Arm. Therefore please refer to operation and maintenance section of the standard machine.

# OPERATION INSTRUCTIONS FOR 17M LONG REACH BOOM AND ARM



- |   |                 |    |                       |
|---|-----------------|----|-----------------------|
| 1 | Bucket          | 6  | Boom cylinders        |
| 2 | Bucket cylinder | 7  | Travel motor sprocket |
| 3 | Arm             | 8  | Track frame           |
| 4 | Arm cylinder    | 9  | Track shoe            |
| 5 | Boom            | 10 | Idler                 |

Track shoe (mm)	PC360LC-10	
	Operating weight (kg)	Ground pressure (kg/cm <sup>2</sup> )
700mm	42127	0.64
800mm	42507	0.56
850mm	42697	0.54

PC360LC-10	
Max Digging Reach (to bucket teeth) (mm)	17000

**Note: Specifications are subject to change without notice.**

## **WORKING MODES**

The table gives an indication of the type of work and method of use recommended. Please follow these recommendations.

### A. Type of work

R - Recommended work.

C - Work requiring caution.

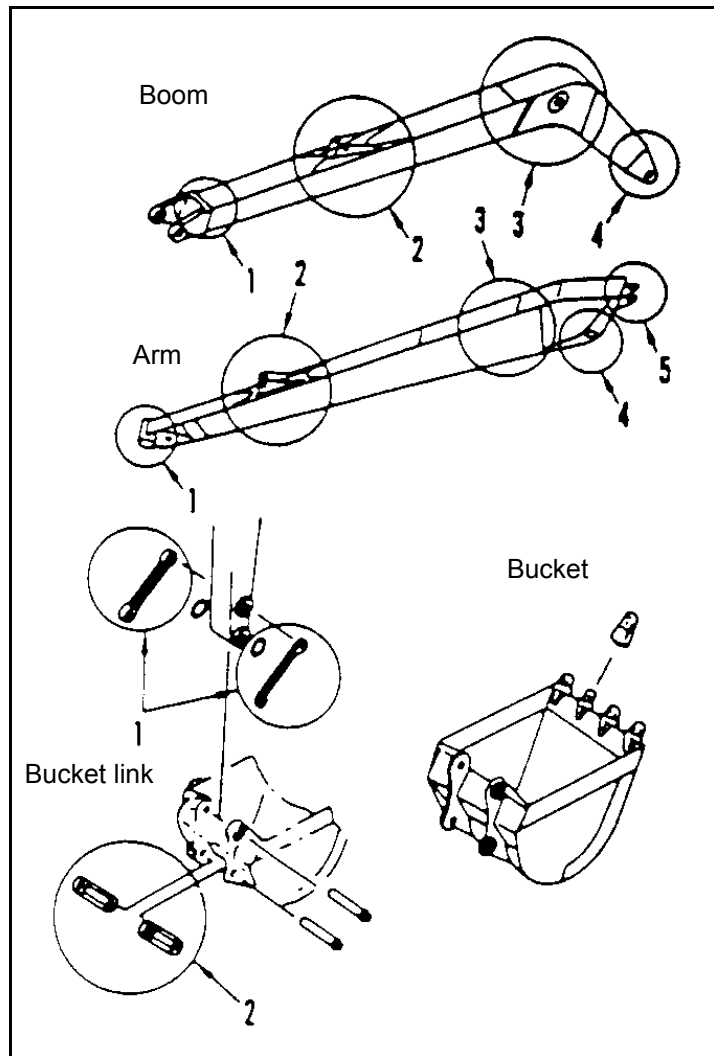
N - Work that is not permitted.

<b>Work</b>	
1. Dredge rivers (specific gravity max 1.8)	R
2. Hauling, loading dry sand (s.g. max 1.8)	R
3. Digging, hauling piled soil (s.g. max 1.8)	R
4. Digging clay layers	C
5. Digging bank	R
6. Quarry work or digging bedrock	N

## **CHECKS BEFORE STARTING**

To maximise safety when using the super long front machine and to identify any damage to the equipment early, carry out the following checks before starting the machine.

- Check daily for any loose nuts or bolts and tighten any that are found.
- Check daily for any oil leakage.
- Check all parts of the work equipment for any cracks, bending, buckling and play of the boom and arm. If any abnormality is found, contact your Komatsu distributor immediately. Locations for checking are shown below:



## **USING 17M LONG REACH**

### **⚠ WARNING**

Never slew the machine if no work equipment is fitted.

### **⚠ WARNING**

Take care when raising the work equipment to its highest point. Make sure the machine is in a stable condition at all times.

**⚠ CAUTION**

The 17m Long Reach machine is not to be used for lifting

**⚠ CAUTION**

Always use low travel speed and avoid travelling over rough ground.

**⚠ CAUTION**

Do not use the equipment so that the machine lifts off the ground

**⚠ CAUTION**

Check the stability of the 17m Long Reach machine carefully (left, right, front and rear) before starting work operations.

**⚠ CAUTION**

Do not use the POWER MAX switch. Do not use in P mode.

**⚠ CAUTION**

Do not bring any shock loading on the work equipment.

**⚠ CAUTION**

Do not apply any side load to the bucket.

**⚠ CAUTION**

Attachments like breakers and fork grabs may not be used.

**⚠ CAUTION**

Use with engine throttle at 70-80% for ease of use and safety.

**⚠ CAUTION**

Do not operate the 17m Long Reach machine control levers in the same way as a standard excavator. The 17m Long Reach equipment has a higher inertia and will achieve higher velocities, causing wear and damage.

**METHOD OF WORK.**

- Avoid operating the bucket cylinder and arm cylinder to the end of their stroke.
- Use for maximum specific gravity 1.8 tonnes/m<sup>3</sup>.
- Take care when using the 17m Long Reach machine on soft ground. Ensure the ground has sufficient strength to support the weight of the machine with loaded bucket before commencing operations.
- Where possible, avoid using the 17m Long Reach machine on slopes.
- Do not use this equipment for compacting slope faces.
- When travelling, lower the boom, pull in the arm, keep the work equipment parallel to the track and travel slowly.
- Do not use any bucket with a capacity greater than shown in this table.

Buckets which do not conform to this table must not be used.

Parameter	PC360LC-10 17m
Max digging radius, mm	1100
General Purpose Bucket, material density 1.8 ton/m <sup>3</sup>	
• Capacity (ISO, m <sup>3</sup> )	0.93
• Maximum Width (mm)	1000
• Maximum Weight (kg)	780
General Purpose Bucket, material density 1.2 ton/m <sup>3</sup>	
• Capacity (ISO, m <sup>3</sup> )	1.11
• Maximum Width (mm)	1200
• Maximum Weight (kg)	890
Bucket	
• Maximum weight at the end of the arm (kg)	2454
Ditching Bucket, material density 1.1 ton/m <sup>3</sup>	
• Maximum Width (mm)	2100

Values shown are in accordance with EN474-5:2006+A1:2009 (E)

** WARNING**

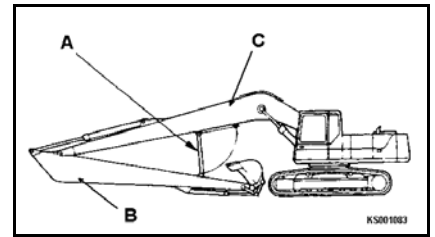
**Do not use any attachment which imposes vibration loading onto the equipment.**

**WHEN TRAVELLING**

- Lower the boom, pull in the arm, keep the work equipment parallel to the track and travel slowly.
- Never mount obstacles when travelling on rough ground. This may cause the machine to become unstable and overturn.

## TRANSPORT & STORAGE OF LONG REACH MACHINE INSTALLATION OF SUPPORTING LINK

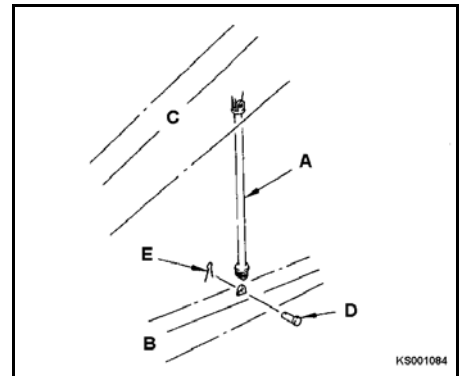
- For transportation or storage, always use the supporting link (A) to secure the arm (B) and boom (C) as shown. This will help to prevent excessive force bearing on the boom and arm.
- Other precautions for transport and storage can be found in "TRANSPORTATION PROCEDURE (3-212)" of the standard machine manual.



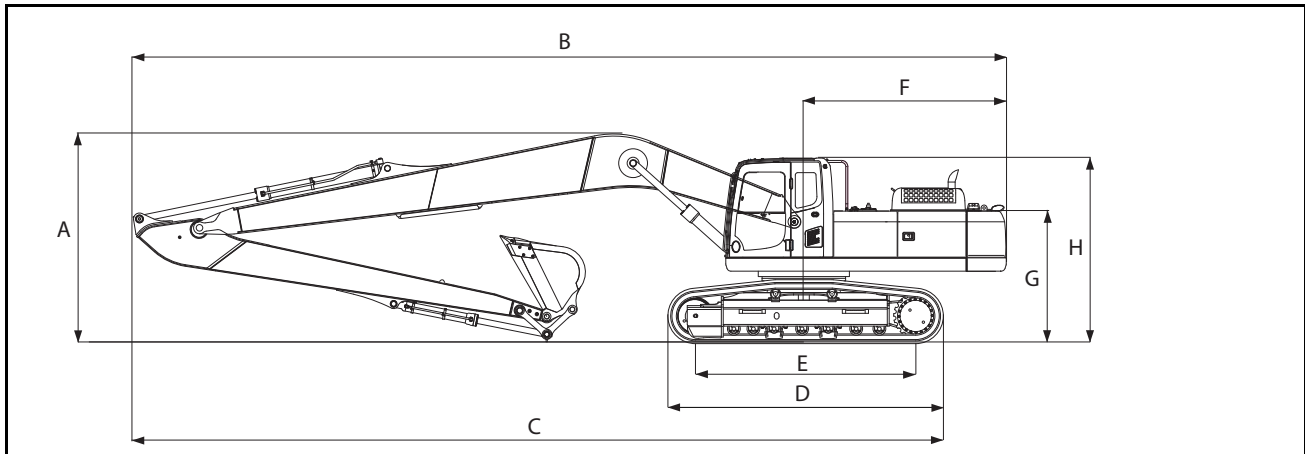
### Procedure for installing link

(1) Supporting link - weight 30kg.

1. Lower the boom and extend the arm cylinder to set in the stow posture.
2. When the arm cylinder is almost at the end of the stroke, lower the boom slowly to bring the bucket or bucket link into light contact with the ground.
3. Remove the end of the supporting link (A) from the boom (held by a pin (D) and snap ring (E)), then install it to the arm with the pin (D) and snap ring (E). When doing this, raise the boom slightly and retract the arm cylinder slightly from the end of the stroke (5 mm - 10 mm) to align the holes correctly.
4. It is dangerous to carry out this operation with the arm raised from the ground.



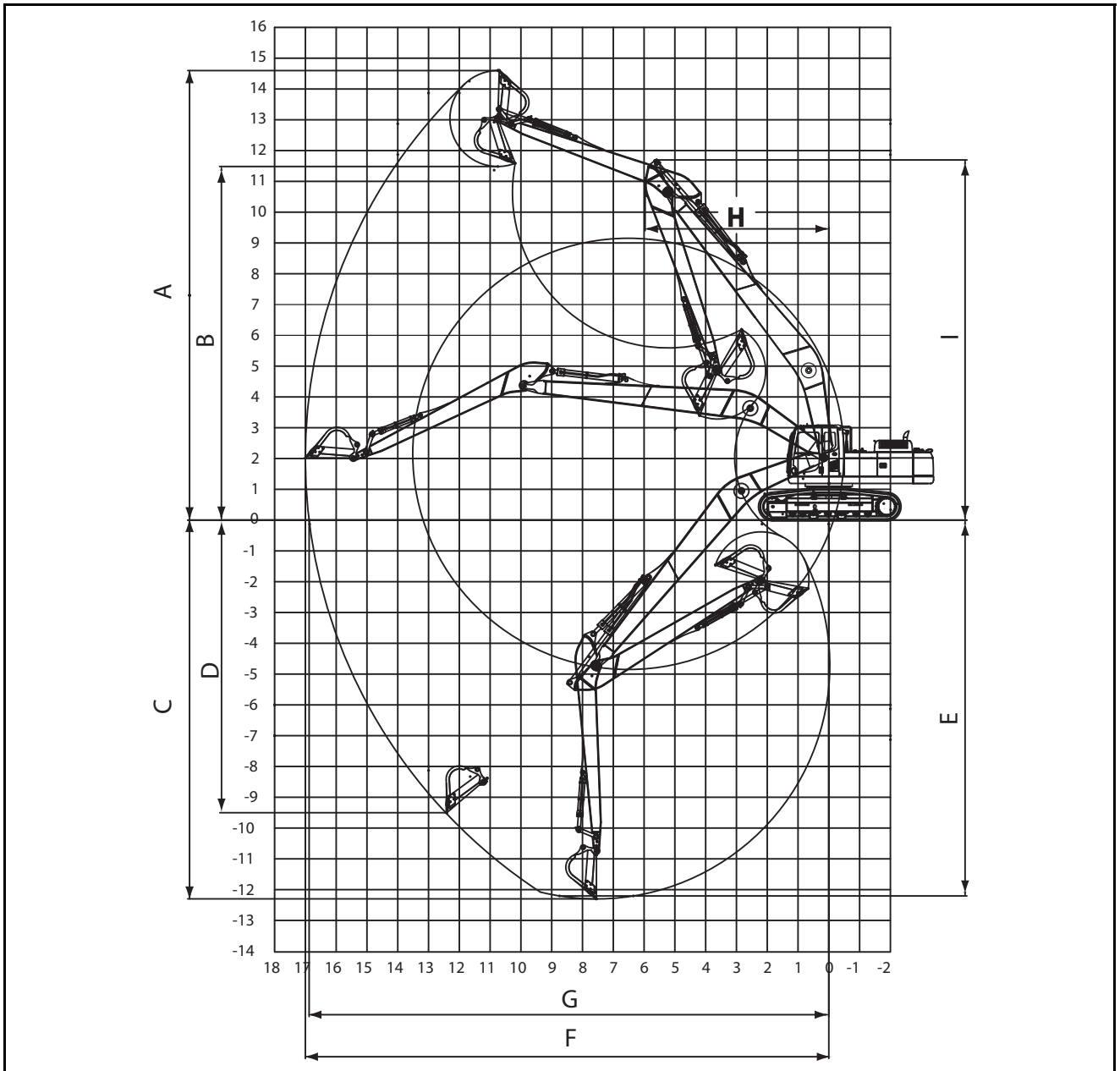
**TRANSPORTATION OF 17M LONG REACH MACHINE**



	Item	Unit	PC360LC-10 (17m long reach)
	Undercarriage type		LC
A	Overall shipping height	(mm)	3570
B	Overall shipping length	(mm)	14770
C	Transport length	(mm)	13570
D	Track length	(mm)	4955
E	Track length on ground	(mm)	4030
F	Tail swing radius	(mm)	3740
G	Machine tail height	(mm)	2400
H	Overall height of cab	(mm)	3160



## WORKING RANGE OF 17M LONG REACH



		Unit	PC360-10 (17m long reach)
A	Maximum digging height	(mm)	14595
B	Maximum dumping height	(mm)	11490
C	Maximum digging depth	(mm)	12300
D	Maximum wall digging depth	(mm)	9445
E	Maximum digging depth for 2400 mm level	(mm)	12200
F	Minimum digging reach	(mm)	17000
G	Maximum reach at ground level	(mm)	16880
H	Minimum swing radius	(mm)	5970
I	Maximum height of minimum swing	(mm)	11700

## LIFTING CAPACITY PC360LC-10 17M LONG REACH

### ⚠ WARNING

This table is provided for guidance only. The Long Reach attachment is not intended for lifting operations. Do not exceed the maximum loading conditions described in "METHOD OF WORK. (8-6)".

Data provided for PC360LC-10 17m Long Reach with 800 mm trackshoe including 450kg bucket.

A - Reach from swing centre

B - Bucket hook height

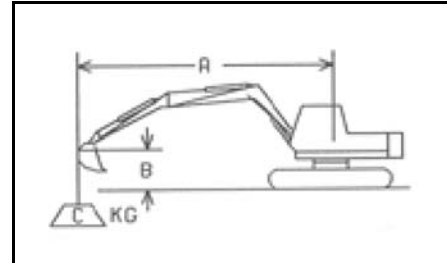
OF - Rating over the front

OS - Rating over the side

MAX - Rating at maximum reach

\* - Limited by hydraulic capacity rather than rated stability.

Loads do not exceed 87% of hydraulic capacity or 75% of tipping capacity.



L	A	kg															
		MAX		15m		13.5m		12m		10.5m		9m		7.5m		6m	
		OF	OS	OF	OS	OF	OS	OF	OS	OF	OS	OF	OS	OF	OS	OF	OS
PC360LC-10 17m Long Reach	12	*1800	*1800					*2220	*2220								
	10.5	*1710	*1710					*2720	*2720								
	9	*1670	*1670			*2630	*2630	*2760	*2760								
	7.5	*1660	*1660			*2680	*2680	*2880	*2880								
	6	*1690	*1690	*2410	*2410	*2780	*2780	*3040	*3040	*3390	*3390						
	4.5	*1750	*1750	*2660	*2660	*2910	*2910	*3240	*3240	*3680	*3680	*4290	*4290				
	3	*1840	*1840	*2730	*2730	*3040	*3040	*3450	*3450	*3980	*3980	*4740	*4740	*5910	*5910	*7920	*7920
	1.5	*1960	*1960	*2810	*2810	*3180	*3180	*3640	*3640	*4270	*4270	*5170	*5170	*6550	*6550	*8880	*8880
	0	*2130	*2130	*2860	2830	*3280	*3280	*3810	*3810	*4510	*4510	*5500	*5500	*6980	*6980	*9790	*9790
	-1.5	*2360	*2360	*2850	2760	*3340	*3340	*3910	*3910	*4660	*4660	*5700	*5700	*7190	*7190	*9390	*8390
	-3	*2660	*2660	*2730	*2730	*3330	3300	*3950	*3950	*4720	*4720	*5750	*5750	*7180	*7180	*9180	*9180
	-4.5	*2790	*2790			*3200	*3200	*3870	*3870	*4650	*4650	*5650	*5650	*6970	*6970	*8750	*8750
-6	*2800	*2800			*2880	*2880	*3640	*3640	*4420	*4420	*5360	*5360	*6560	*6560	*8100	*8100	
-7.5	*2770	*2770					*3150	*3150	*3980	*3980	*4860	*4860	*5900	*5900	*7190	*7190	
-9	*2640	*2640							*3190	*3190	*4000	*4000	*4930	*4930	*5930	*5930	
-10.5	*2290	*2290									*2670	*2670	*3460	*3460	*4150	*4150	

# MAINTENANCE

## SPECIAL SERVICE REQUIREMENTS FOR 17M LONG REACH WORK EQUIPMENT

### CAUTION

When working in water or in wet sand, use molybdenum (LM-P) for the grease.

### WARNING

NEVER slew the upper structure of a Long Reach machine if the boom and arm have been removed.